

AITCHISON

AITCHISON ROTACON

TRANSFER ROLLER

TR275/TR300

Operator's Manual



Reese Engineering Ltd
Aitchison Industries

Palmerston North, New Zealand
Telephone: +64 6 357 9323
Facsimile: +64 6 354 3155
www.reese.co.nz
www.aitchison.co.nz





Introduction

Dear Valued Owner,

Congratulations, you have just made an excellent investment. This Machine is New Zealand made. We are proud of this and Thank you for your much needed support.

Your new Aitchison Transfer Roller has been designed and engineered to give years of dependable service. Every consideration has been taken to incorporate the latest technology, thus ensuring optimum Ground Rolling is achieved. Aitchison Transfer Rollers provide the optimum agronomic environment, ensure proper ground leveling, leading to superior Grass Growth crops and thus greater revenue earning potential.

It has often been said “when all else fails-read the operators manual” and to ensure you get the best from your new Aitchison Transfer Roller, it is very important that you thoroughly read through the entire contents of the manual. Please understand the setup system and consider the design features and their specific functionality.

Your local dealer carries an extensive range of genuine Aitchison spare parts and consumables that also have been engineered to provide long service and life, it is important that only genuine parts are used on your Aitchison Transfer Roller.

Thank you for making your investment in our expertise.

Yours Sincerely,

**Ross Simpson
Rob Baan**

**Directors
Reese Agri**

WARNING

THE OPERATION AND ADJUSTMENT OF THE REESE MACHINE REQUIRES A COMPLETE KNOWLEDGE OF THE CONTENTS OF THIS HANDBOOK. TO VOID PERSONAL INJURY PLEASE ENSURE THAT ALL PERSONNEL ARE THOROUGHLY CONVERSANT WITH ALL DETAILS BEFORE COMMENCEMENT OF OPERATION OR MAINTENANCE.

WARRANTY

COMPLETE AND RETURN WARRANTY REGISTRATION TO ENSURE VALIDATION.

IN THE USA RETURN TO: REESE EQUIPMENT INC, PO BOX 20188, LOUISVILLE, KY 40220-0188.
IN AUSTRALIA AND NZ RETURN TO: REESE ENGINEERING LTD, PO BOX 5056, PALMERSTON NORTH, NEW ZEALAND

REESE warrants that the Machine delivered shall conform to the specifications set out in this Handbook.

REESE makes no warranty of salability or fitness for a particular use, nor is there any other express or implied warranty.

Subject to such other conditions, warranties, and/or undertakings which may apply from time to time under any applicable law, REESE warrants with respect to each new AITCHISON Machine sold by its accredited agents, that for a period of twelve months from the dates of original retail sale, REESE will repair or replace free of charge any part found to be defective in factory materials or workmanship under normal use and operation within the United States of America, Canada, Australia and New Zealand provided that;

The Machine

- (a) has been properly assembled and adjusted
- (b) has been properly used and operated within the capacity and operating limitations specified by the manufacturer thereof, and
- (c) has been properly maintained and cared for.

This Warranty applies to direct purchase from an authorized AITCHISON dealer. If any defect or fault shall arise such purchaser must return the defective work or Machine to an

authorized AITCHISON Dealer within ten working days of such defect or fault arising.

in the event of the purchaser attempting to repair or replace the work or product without prior written consent of an authorized AITCHISON Distributor this guarantee shall become void. REESE may replace or repair any damaged product or work at its discretion.

In respect of such Machine this warranty does not apply to

- (d) misuses or carelessness in handling,
- (e) Noncompliance to REESE's operating and maintenance instruction,
- (f) Unauthorized repairs or alterations,
- (g) Consequential damage resulting from misuse or initial faults,
- (h) Parts subjected to wear or damage as a result of normal operation i.e.
 - i. Hydraulic components

Any disputes in relation to this contract or product shall be governed by New Zealand law and shall be determined in New Zealand courts

TO THE OWNER AND OPERATOR

Your Aitchison Transfer Roller has been carefully designed and manufactured to give you years of dependable service. To keep it running efficiently, read and follow the instructions in this operator's manual. Any questions you may have that are not covered in this manual should be referred to your dealer:

Dealers Name: _____

Address: _____

Phone No: Business: _____ Private: _____

Date of Purchase: _____

Model: _____ Serial Number: _____

WARRANTY

The warranty card on your Transfer Roller is included with this manual. Please ensure that the registration card is correctly filled in.

The owner must ensure the dealer, upon delivery of the machine, has completed the **WARRANTY REGISTRATION CARD**. This must be signed by the owner and returned to the factory promptly.

Failure to carry out this function could nullify warranty claim opportunities against the factory in the future.

Warranty claims will only be accepted for registered products.

Indemnity from liability is a complex subject. Our indemnity makes it clear that we are not liable for any claim lodged for breakdown, delays, or machine down time, crop failure or any other contingency involving the use of our equipment. In all these circumstances the user can take precautionary measures to ensure that none of these problems occur or like having on-hand spare parts at the local dealer.

ORDERING PARTS AND ACCESSORIES

When ordering spare parts, quote the model and serial number of the transfer roller. Reference to the right hand and left hand is taken from behind in the direction of travel.

SAFETY FIRST

Keep all covers in place when using the drill.

Stop the Transfer Roller before making adjustments.

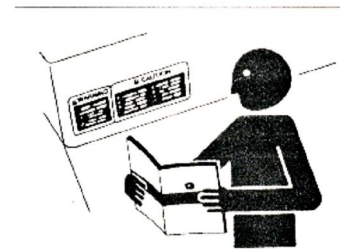
Lower the Transfer Roller to the ground or put on props when working around the machine.

Tighten all nuts and bolts after initial use.

FOLLOW SAFETY INSTRUCTIONS

Carefully read all safety messages in this manual and on your machine safety signs. Replace missing or damaged safety signs, these can be ordered from your local Aitchison dealer.

Learn how to operate the machine and how to use controls properly. Do not let anyone operate it without instruction.



Keep your machine in proper working condition. Unauthorized modifications to the machine may impair the function and/or safety and affect machine life.

If you do not understand any part of this manual and need assistance, contact your Aitchison dealer.

OPERATE YOUR MACHINE SAFELY

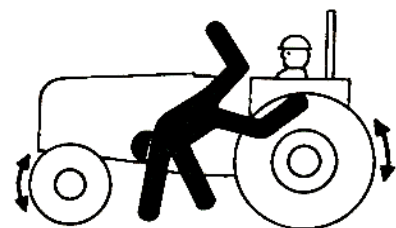
Be careful when operating machine to avoid injury.

Serious injury or death can result from contact with electric lines. Use care when moving or operating the machine near electric lines to avoid contact.



Be careful when operating on hillsides, tractor can tip sideways if it strikes a hole, ditch or other irregularity.

Permit only one person, the operator, on tractor platform while tractor and Transfer Roller are in operation. Keep riders off. They are subject to injury such as being struck by foreign objects and being thrown off the machine. They also obstruct the operators view.



WEAR PROTECTIVE GEAR

Wear close fitting clothes and safety equipment appropriate to the job.

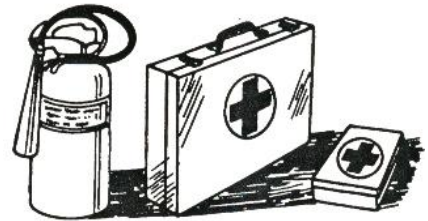
Wear suitable hearing protective device as prolonged exposure to loud noise can cause impairment or loss of hearing. Wear safety gloves when working with discs as they can have sharp edges.

Operating equipment safely requires the full attention of the operator. Do not wear radio headphones while operating machine.



BE SAFE WITH CHEMICALS

Direct exposure to agricultural and hazardous chemicals can cause serious injury. Potentially hazardous chemicals are used with Aitchison equipment include such items as lubricants, coolants, fertilizer, paint and adhesives. If in doubt, contact your local Aitchison dealer for information about chemical safety and first aid procedures. Keep a fire extinguisher and first aid kit handy.

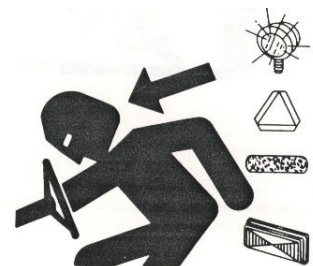


When disposing of chemicals, make sure hoppers are properly washed to get rid of any chemical residue and that any chemicals are disposed of in an approved manner. Follow instructions of chemical manufacturers for disposal methods.

USE SAFETY LIGHT AND DEVICES

Slow moving tractors and equipment can create a hazard when driven on public roads. They are difficult to see, especially at night. This could lead to personal injury or death if a collision with a vehicle occurs.

Whenever driving on public roads, use flashing warning lights. Provide extra lighting at night on machine and tractor. An implement safety lighting kit is available from Aitchison Industries.



TRANSPORT SAFELY

Do not exceed transport speed for machine; see your local Aitchison dealer. Never transport at any speed which does not permit adequate control of steering and stopping. Reduce speed over rough ground. For safe transport, tractor must weigh more than machine.

REDUCE SPEED WHEN TOWING LOADS

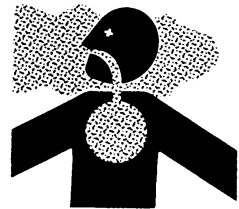
Braking to stop towed loads from transport speeds can cause the towed load to swerve and upset. Reduce speed if towed load weighs more than the tractor and is not equipped with brakes. Use additional caution when towing loads under adverse surface conditions, when turning and on lines.



PRACTICE SAFE MAINTENANCE

Understand service procedure before doing work. Keep area clean and dry.

Never lubricate, service or adjust machine while it is moving. Keep hands, feet and clothing from power driven parts. Disengage all power and operate controls to relieve pressure. Lower equipment to the ground. Allow machine to cool.



Securely support any machine elements that must be raised for service work.

Keep all parts in good condition and properly installed. Fix damage immediately. Replace worn or broken parts. Remove any buildup of grease, oil, or debris.

Remove paint before welding or heating. Avoid potentially toxic fumes and dust when sanding, repainting or welding. Do all work outside in a well-ventilated area. Dispose of paint and solvent properly.

Avoid heating near pressurized fluid lines or other flammable materials. Pressurized lines can be accidentally cut when heat goes beyond the immediate flame, which could result in severe burns to yourself and bystanders.

Avoid high-pressure fluids. Escaping fluid under pressure can cause injury. Relieve pressure before disconnecting hydraulic or other lines.

DISPOSE OF WASTE PROPERLY

Improper disposing of waste can threaten the environment and ecology. Use leak-proof equipment when draining fluids. Do not use food or beverage containers that may mislead someone into drinking from them.



Do not pour waste onto the ground, down a drain, or into any water source. Use the manufacturer's directions on the correct way to recycle or dispose of waste.

TRANSFER ROLLER OPERATING INSTRUCTIONS.

PRINCIPLE:

The Aitchison TRANSFER ROLLER uses a unique weight transfer system to increase and decrease downward pressure on the roller. The tractor weight can be transferred to the roller from the driver's controls.

A 4 wheel drive tractor is necessary for this operation, as the tractor weight is transferred. The aim is not to lift the rear wheels off the ground but to have them both just making contact with the ground, hence the front wheels are needed for traction.

OPERATING:

1. Connect the TRANSFER ROLLER to the 3 point links at the rear of tractor.
2. Connect the TOP LINK RAM from the tractor to the ROLLER.
3. With the ROLLER sitting on the ground and with the TOPLINK RAM fully retracted connect the 10mm LINK CHAIN & SHORTENING CLEVIS **SECURELY** to the tow bar of tractor to the WEIGHT TRANSFER SPRING, ensure there is about 100mm slack in the chain.

See: Transfer Roller drawing 1.

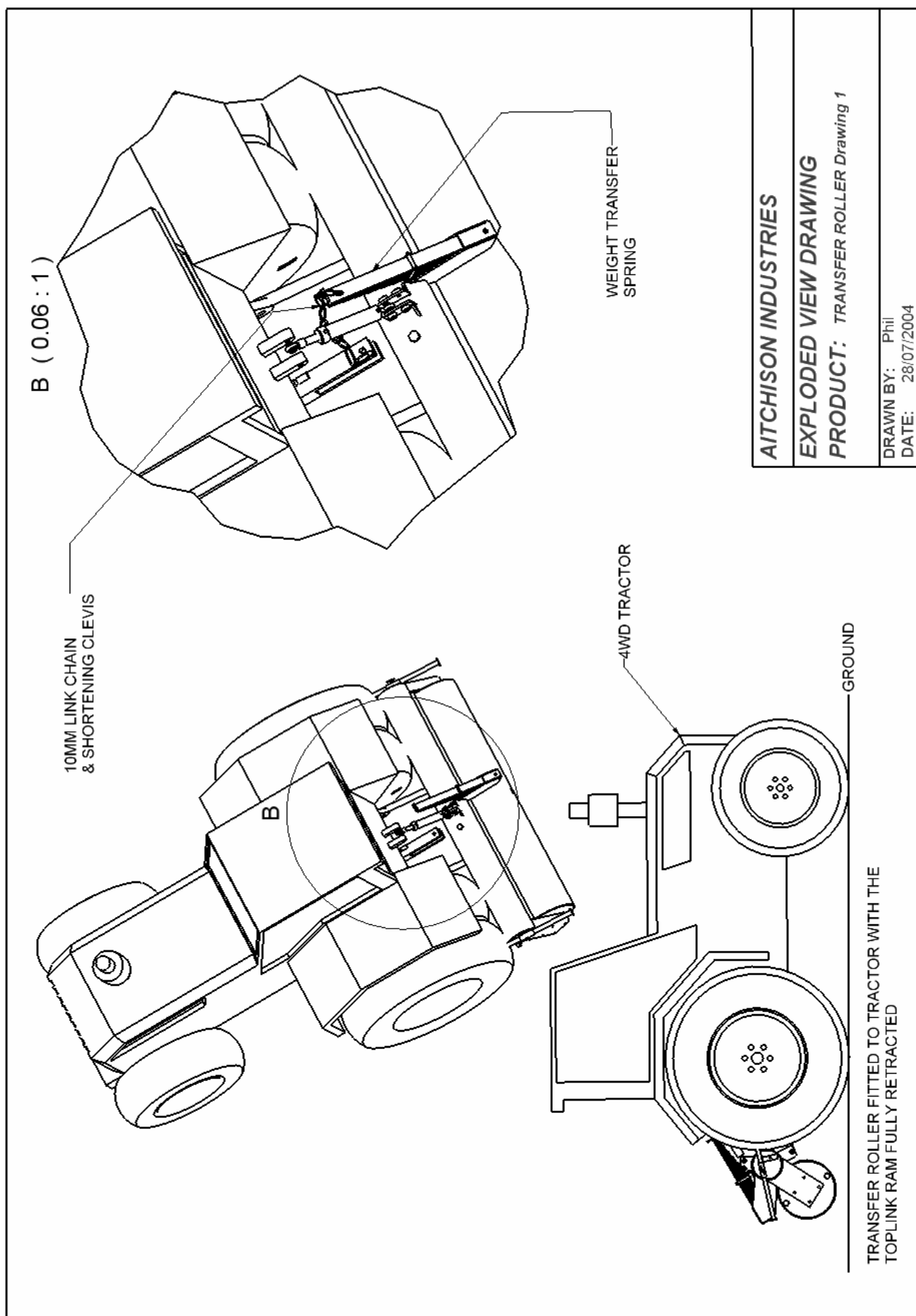
CARE MUST BE TAKEN WHEN CONNECTING THE CHAIN TO THE TRACTOR TOW BAR, SERIOUS INJURY COULD OCCUR IF CHAIN DISCONNECTS DURING OPERATING.

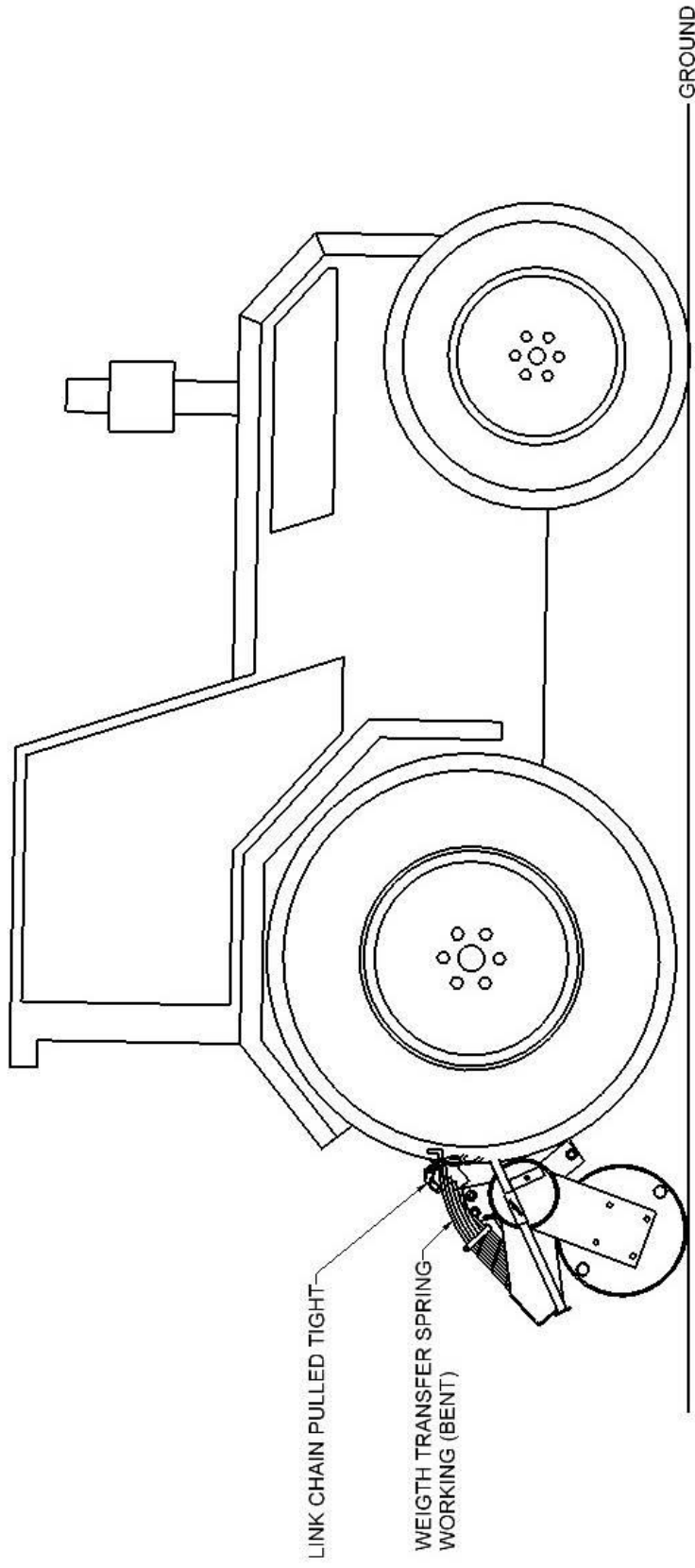
4. With the LINK CHAIN connected slowly extend the top TOPLINK RAM and watch the rear wheels of the tractor, they should lift up. The aim is not to lift the rear wheels off the ground but to have them both just making contact with the ground. (Make adjustments to the LINK CHAIN on the TRANSFER SPRING to get this affect.)

See: Transfer Roller drawing 2.

5. When lifting the ROLLER on 3 point linkage the TOPLINK RAM must be **fully retracted before lifting. If this TOPLINK RAM is not retracted before lifting, DAMAGE may occur to the TRANSFER SPRING.** Only lift roller as high as needed to clear the ground.

See: Transfer Roller drawing 3.





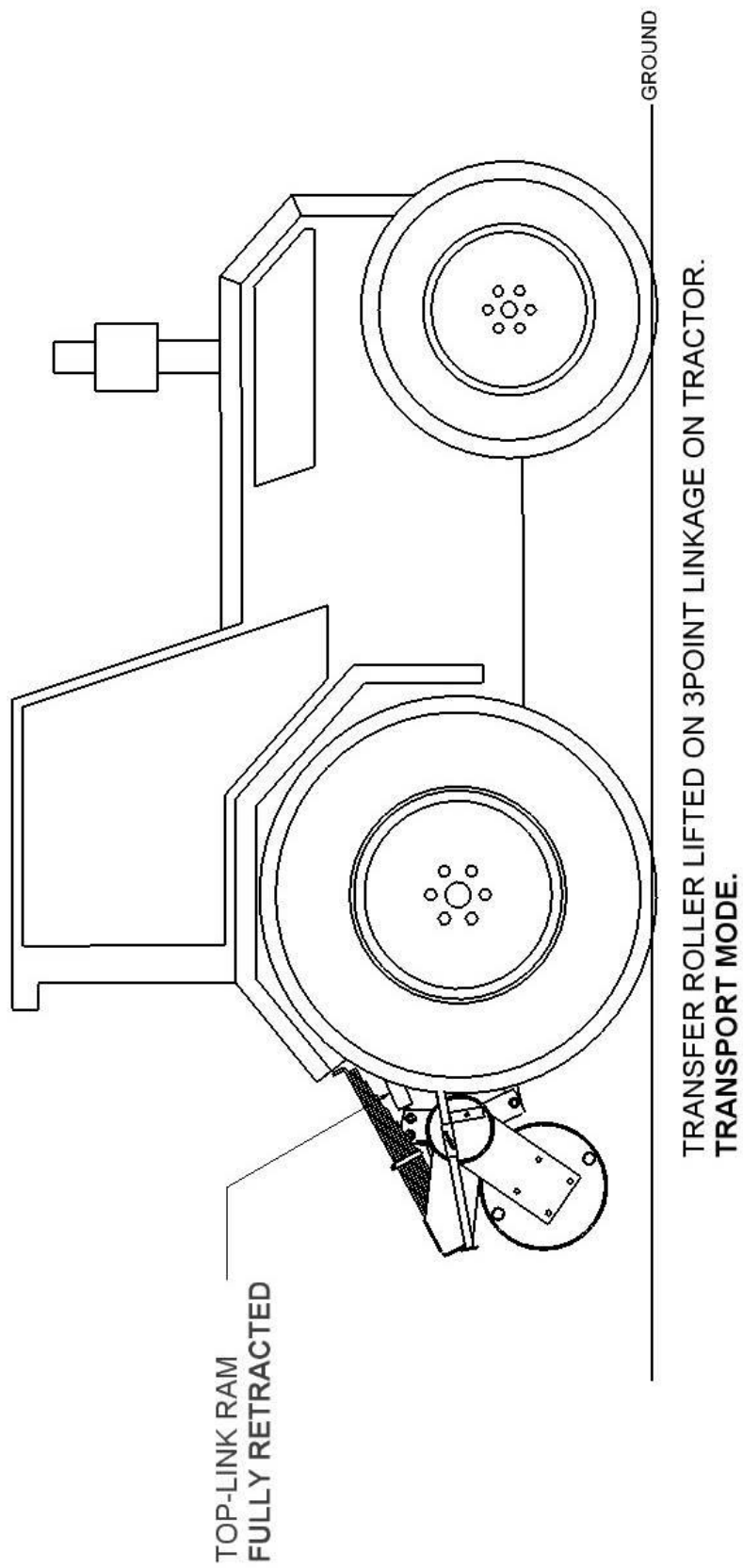
**TRANSFER ROLLER FITTED TO TRACTOR WITH THE
TOPLINK EXTENDED**

AITCHISON INDUSTRIES

EXPLODED VIEW DRAWING

PRODUCT: TRANSFER ROLLER Drawing 2

DRAWN BY: Phil
DATE: 28/07/2004



AITCHISON INDUSTRIES

EXPLODED VIEW DRAWING

PRODUCT: *TRANSFER ROLLER Drawing 3*

DRAWN BY: Phil
DATE: 28/07/2004